

BUCKBY MOTORS RALLY TASMANIA



Service Crew Information

22-24 NOVEMBER 2024

ROUND 6 BOSCH
MOTORSPORT AUSTRALIA
RALLY CHAMPIONSHIP

RALLY.COM.AU/TASMANIA

EVENT SPONSORS



CHAMPIONSHIP SPONSORS / RALLY.COM.AU



1 Introduction

Welcome to the 2024 Buckby Motors Rally Tasmania bringing together competitors from the Bosch Motorsport Australia Rally Championship and the Motorsport Australia Tasmanian Rally Championship as the final round of the Championship.

If you have an emergency on event, please call the Rally Command Centre on **0489 016 930**. If this is a medical emergency call 000 first.

2 Briefing

- (a) Thank you all for attending and supporting your Team at this event.
- (b) Remember “Motor Racing” is DANGEROUS – The *Rules* and instructions must be strictly adhered to. *Motorsport Australia* OH&S Policy is to be observed.
- (c) Service Bays have been allocated as per the service park layout plan. Consideration will be given to:-
 - (i) Service Vehicles - trucks, cars, service sharing etc.
 - (ii) Service Park allows for 10mx10m ARC (unless area is required for trucks) 8m x 10m for TRC
- (d) The Speed in the Service Park is a maximum of 15 km/h (Walking pace). We are expecting many Spectators in the Service Park. Always consider Spectators, Service Crew and Officials will be moving around the Service Park. Vehicles seen to be driving in a manner that may put people at risk may be reported to the Stewards for consideration of a penalty.
- (e) Vehicle movement in the Service Park must always be in the directions as shown on the Service Park map. Vehicles travelling in a direction contrary to the Service Park map may be reported to the Stewards for consideration of a penalty.
- (f) No alcohol may be consumed in the Service Park or Rally Precinct until cessation of competition on each day.
- (g) Service Bays are to be kept clean and free of rubbish. Please bring a supply of garbage bags for general waste and place rubbish in the bins provided.
- (h) The Service Park is a smoke free zone. Please DO NOT smoke in the Service Park.
- (i) All servicing will be done at the Service Park.
 - (i) Tarps are required to be used under Rally Cars during Service activities
 - (ii) Stable vehicle stands must be used when Rally Cars are raised off the ground
- (j) No service vehicle may drive on a competitive stage during the running of the Event without the express permission of the Clerk of the Course. If vehicle recovery is required, service crews are asked to contact Rally Headquarters for instructions.
- (k) Service crews must always obey the Road Traffic Regulations of Tasmania
- (l) Penalties applicable for service crews detected speeding during an *Event* are:

First offence:	\$200 fine
Second offence:	\$500 fine
Third and subsequent offences:	\$1000 fine each case

- (m) Within the Events Service Park, cars may only be washed by use of a sponge from a bucket. Where fuel, oils, solvents, and degreasing fluids are used all residues must be securely contained and prevented from contacting the ground. The use of pressure cleaners is prohibited. Breaches noted by an Official of the Rally will be reported to the Stewards with a recommendation that a fine be applied
- (n) Due to the limited space in the Service Park. **All** Trailers, Recce Cars and vehicles not involved in the direct servicing of competition vehicles **MUST** be parked in the area on the Service Park maps as Axillary Parking. Any direction from the Service Park officials not following will be reported to the Stewards.

3 Sportity APP

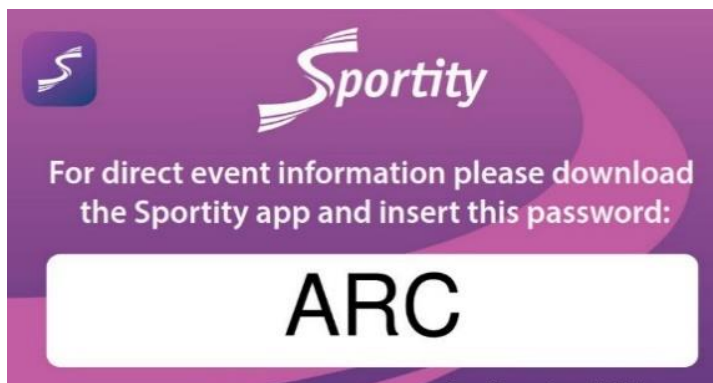
The Bosch Motorsport Australia Rally Championship is using the SPORTITY App as the Official Notice Board for the Rally to communicate with both Teams and Officials.

A lot of relevant information will be held on SPORTITY. This App is available on both Apple and Android.

Down load the App, via QR codes below and enter the password - **ARC**. This will give you access to all ARC rallies this year, open the Rally Launceston folder, and access the information available.

Results will also be available in this platform.

NOTE: This document is included under the “TAS, Officials” folder in SPORTITY. URL links will work direct from the PDF document in Sportity, just double tap.



4 Burnie Overview Map



5 Rally Show

On Friday evening the Rally Show will be held at the Burnie Waterfront.
Cnr North Terrace & Mount St, Burnie

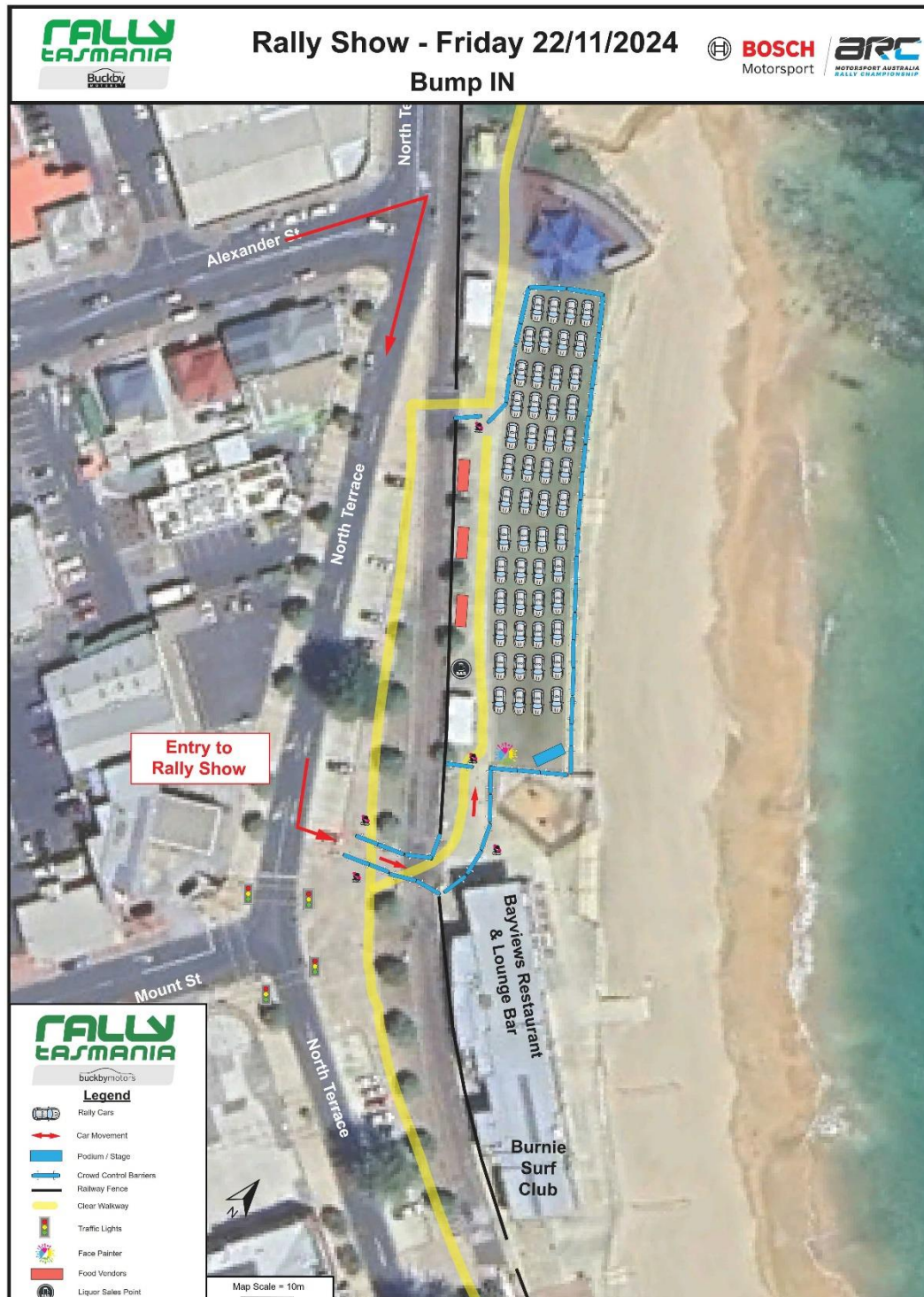
<https://maps.app.goo.gl/CyUnvg5Nx9T8stCD7>



This will start at 5pm and finish at 7pm. It is a free event and no ticket is required.

Crew members are permitted drive the competition car to the Rally Show

- A) Competing cars and their crews are to make their way to the Service Park Regroup Area where they will be placed in numerical order (beginning with car 1) to facilitate parking on arrival at the Rally Show venue.
- B) Departure from the Service Park will begin at 1515hrs via the Bunnings exit gate for arrival at the Burnie Waterfront from 1530hrs. Travel instructions will be issued by Communiqué.



Leaving the Rally Show



6 Service Park & PWS Super Special Stage

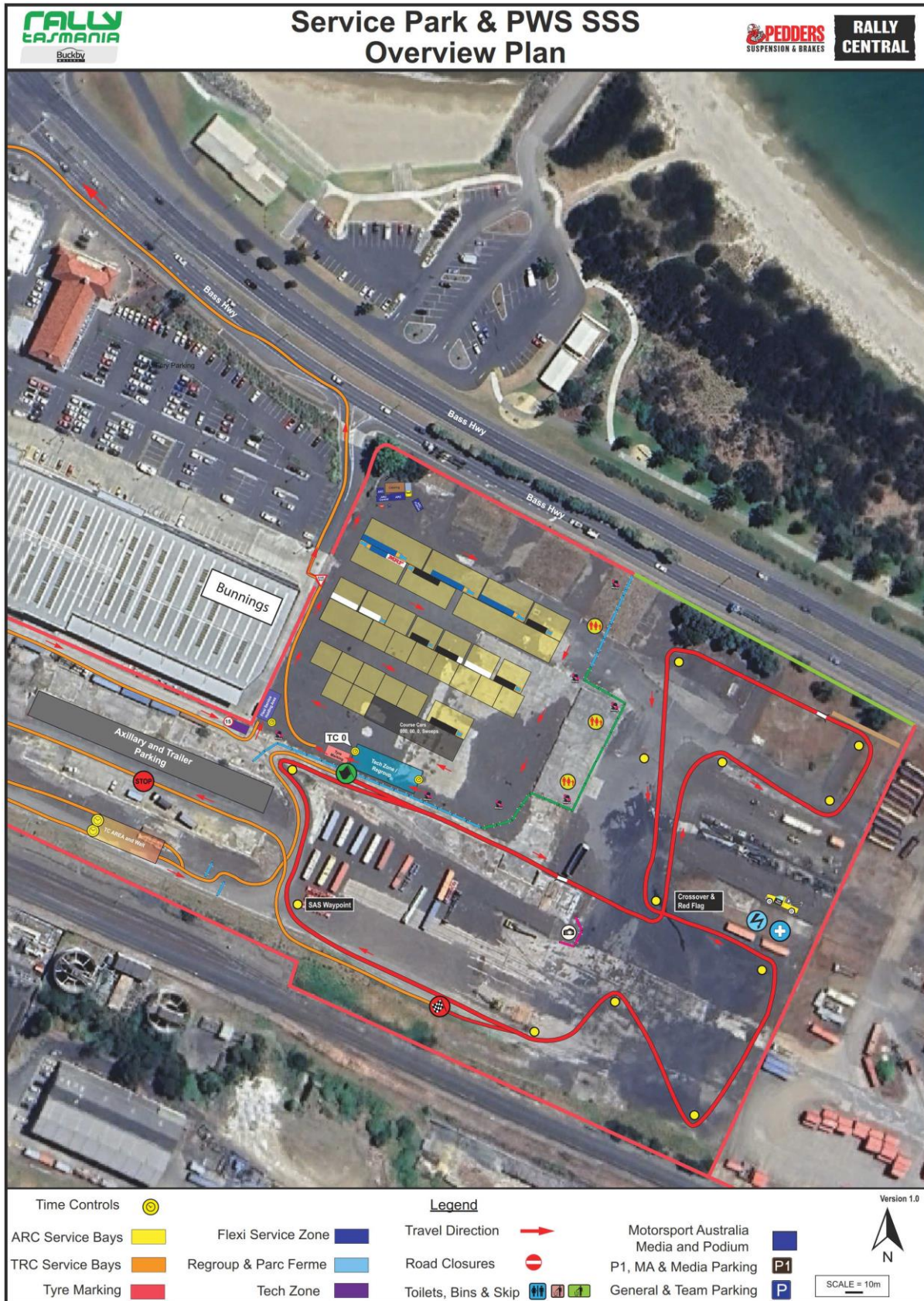
Area next to Bunnings Reeves St, South Burnie

Scan the QR Code or tap on the link below for the location on Google Maps

Entry Via 3 Reeves St South Burnie, Tasmania

<https://maps.app.goo.gl/6D2k52cicPcr6Gcs7>

This image is indicative of the proposed layout.



Service Park allocation as at 13/11/2024



7 Refueling in Service Park

- (a) Due to not being allowed to have a fuel dump in the area, service crews will be allowed to refuel in their own service bays providing,
 - (i) There **MUST** be a 9kg (or equivalent) fire extinguisher on hand, with a Service Crew member manning the fire extinguisher during the refuel operation.
 - (ii) There is to be no-one in the car during the refuel operation.
 - (iii) The engine of the automobile must be switched off throughout the refuel operation.
 - (iv) No activities that generate an ignition source (i.e. welding or grinding etc.) may take place during the refuel operation.
- (b) It is recommended that, in the refuelling area, each service crew member wears fire-resistant clothing, gloves, covered footwear and goggles
- (c) Smoking (which includes e-cigarettes and “vaping”) and any naked flame or activities that generate an ignition source (i.e. welding or grinding etc.) is prohibited within the service bay of any refuelling/defueling operation.

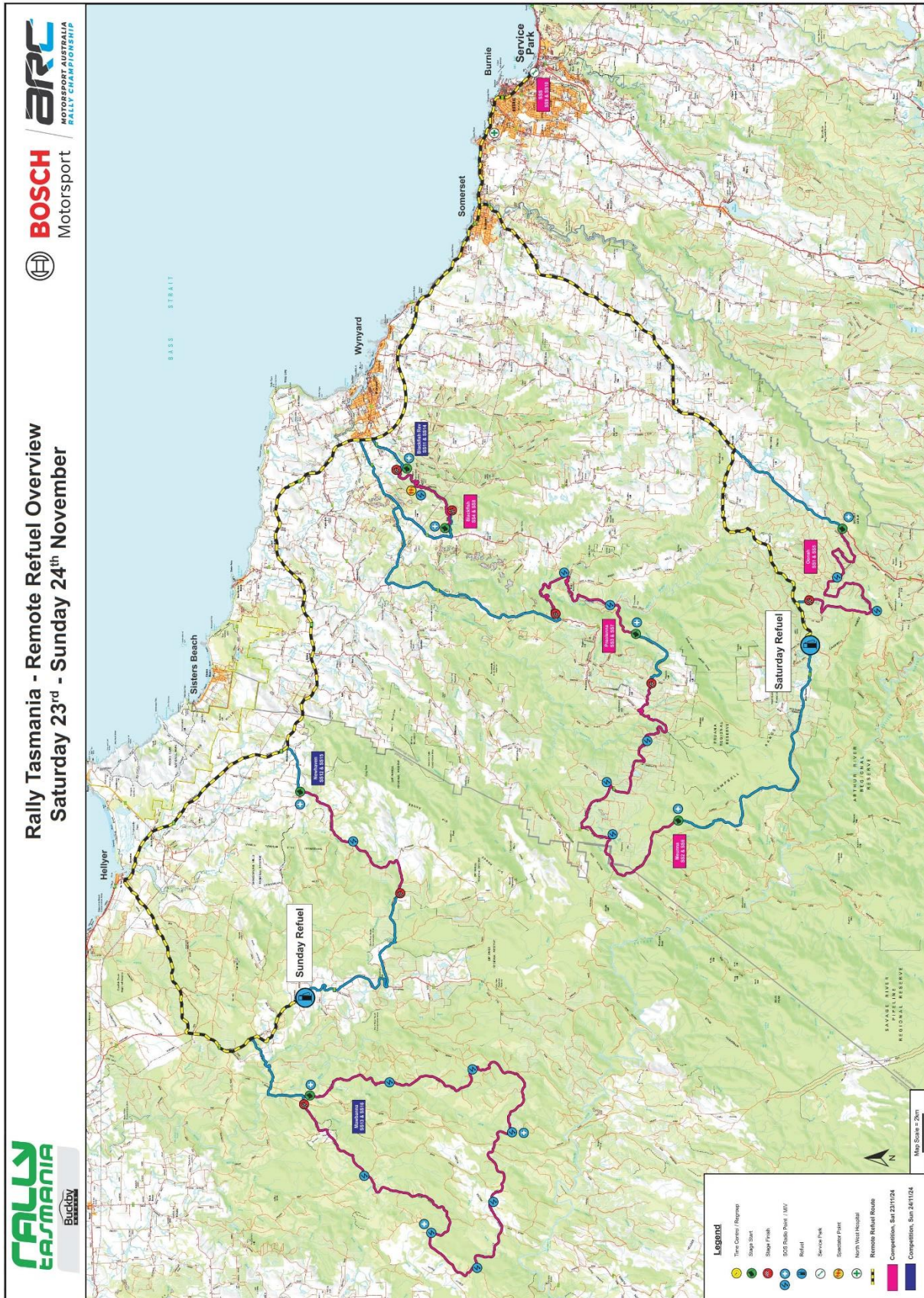
Note: Severing activities many continue during refuel operation. Crews should not work on the car in the immediate vacant of the refuel operation.

8 Remote Refuels

Due to space constraints at the Remote Refuel locations, on both days, only single service vehicles (car or van) of size less than 6 meters in length can attend.

NO TRAILERS

8.1 Overview Map



8.2 Saturday

The Remote Refuel on Saturday is after SS 1 / 5 Oonah.

SS1 First car due 08:36

SS5 First Car due 13:10

Location

Takone Rd, 100 m south of its intersection with Pinners Rd.

GPS - 41° 11.166'S, 145° 34.458'E

Google Map Pin - <https://maps.app.goo.gl/JDdYb15W7i8PwV6a6>

Pin



Route from Service Park

See overview map, also Google Map Route <https://maps.app.goo.gl/uz6zAFbbgp4V5NqG8>

Saturday refuel is approx. 40 km from the Service Park and should take approx. 42 minutes, depending on traffic. The last 4km is on good quality gravel road. Caution should be observed on narrow roads as all roads are two-way traffic.

Route



DIST	INSTRUCTION
0.00	Turn Right into Reeves St, at exit from the back of the Service Park. Behind Bunnings
0.27	Turn Left into Bass Hwy
7.27	Turn left onto Murchison Hwy/A10
	Continue on A10 through Elliott
	A10 keeps left in Yolla, B26 (Mount Hicks Rd) on right, Continue on A10
27.2	Turn Right at Henrietta on to C236 Takone Rd. Follow this road
40.3	Refuel area on the left-hand as per diagram

Remote Refuel Point - Saturday

Legend

- Red arrow: Entry/Leave & Direction
- Blue double arrow: Service Route & Direction
- Ambulance icon: Ambulance
- Red truck icon: Fire Truck
- Blue truck icon: Refuel Hays
- Blue car icon: Service Crews
- White car icon: Offroad Parking

Remote Service Pin Drop

Click / Tap Here for Pin Drop

Scan for Google Maps

Remote Service Route from SP

Click / Tap Here for Directions

Scan for Google Maps

8.3 Sunday

The Remote Refuel on Sunday is after SS 13 / 15 Newhaven.

SS13 First car due 08:51

SS15 First Car due 13:55

Location

Mawbanna Fire Station

Mawbanna Rd, 100 m south of its intersection with Lowers Rd.

GPS - 40° 57.223'S, 145° 22.191'E

Google Map Pin - <https://maps.app.goo.gl/wtX2Ay4Zbrq8iE6i9>

Pin



Route from Service Park

See overview map, also Google Map Route

<https://maps.app.goo.gl/XfM8N92AYLku9jHp6>

Sunday refuel is approx. 70 km from the Service Park and should take approx. 42 minutes, depending on traffic. The last 4km is on good quality gravel road. Caution should be observed on narrow roads as all roads are two-way traffic.

Route



DIST	INSTRUCTION
0.00	Turn Right into Reeves St, at exit from the back of the Service Park. Behind Bunnings
0.27	Turn Left into Bass Hwy
	Continue on Bass Hwy for 53km, through Flowerdale, Boat Harbour, Sister Creek and Rocky Cape
53.1	Turn left onto Loosemores Rd, on the entry to Hellyer
62.0	Turn left onto Mawbanna Rd/C225
70.0	Refuel area on the right-hand as per diagram

Note: The area at the Finish of SS 16 Mawbanna 2 is limited and required for Officials and Media operations.

Service Crews are NOT to attend the finish of SS16



Remote Refuel Point - Sunday



© 2024 Airbus

RALLY TASMANIA
Buckby

Legend

- Rally Route & Direction
- Service Route & Direction
- Fire Truck
- Refuel Bays
- Service Crews
- Officials Parking

Remote Service Pin Drop

Click / Tap Here for Pin Drop

Scan for Google Maps

Remote Service Route from SP

Click / Tap Here for Directions

Scan for Google Maps

9 Clean Up

Please remember when leaving -

- Please take any and all rubbish with you.
- Please leave the area as you found it.

10 After the Event

10.1 Podium

A Podium presentation will be held on Sunday 24th November in the Service Park at approx. 5:00pm



The poster features a dark background with a blurred image of a rally car wheel. At the top right, the logos for Bosch Motorsport and ARC (Motorsport Australia Rally Championship) are displayed. The main title 'ARC AFTER PARTY' is written in large, bold, white capital letters. Below the title, the event details are listed: 'SUNDAY 24 NOVEMBER' and '10:00PM ONWARDS' on the left, and 'BAYVIEWS RESTAURANT & LOUNGE BAR' and 'Level 1, 2 North Terrace Burnie, TAS' on the right. A paragraph of text describes the event as an official after-party for the 2024 season. At the bottom, there are four small images: a restaurant building, drinks on a table, a view of the sea at sunset, and two people sitting at a table.

ARC **AFTER PARTY**

SUNDAY
24 NOVEMBER

BAYVIEWS RESTAURANT & LOUNGE BAR

10:00PM ONWARDS

Level 1, 2 North Terrace
Burnie, TAS

For competitors and officials alike, join us for the Official ARC after-party as we celebrate the 2024 season of the **Bosch Motorsport Australia Rally Championship**.

Held at the picturesque **Bayviews Restaurant & Lounge Bar** in Burnie, enjoy good local beer and wine, while taking unparalleled views of the sea and West Beach. Cash bar from 10:00pm.

